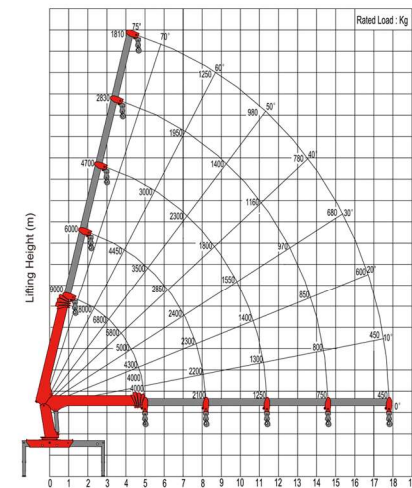
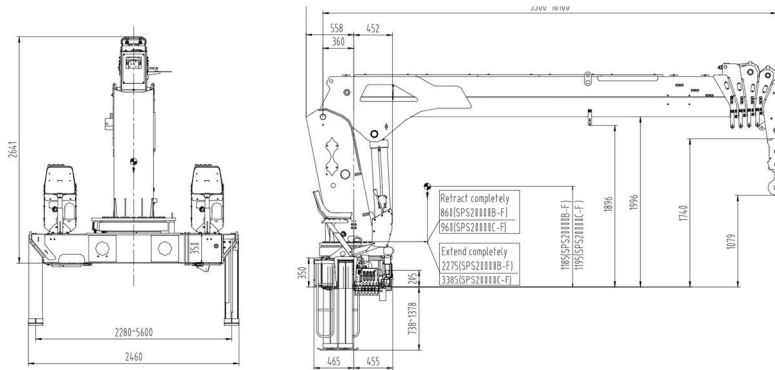


SES-SLC-20.175

STENSOL



Specifications

| | |
|------------------------|------------|
| Max. Lifting Moment | 20.1mt |
| Max Lifting Weight | 9000kg |
| Max Reach | 17.5m |
| Fitting Space | 0.935m |
| Max Operating Pressure | 250bar |
| Pump Capacity | 35-50lpm |
| Dead Weight | 3850kg |
| Boom Raise Angle | Degree 75 |
| Boom Sections | 5 |
| Slewing Angle | Continuous |
| Torque | 16kN.m |

Features

- High Tensile Steel E450
- Overload Protection
- Load Indicator
- Linear Hydraulic System
- Return Filter
- 2years on-site warranty

Strive Engineering Solutions OPC Pvt Ltd

Mail us:- info@striveengineering.com Call us :- 0160-5049982 Visit us:- www.striveengineering.com

Kuruli, Mohali, Punjab (IN.) 140103

CIN U74999PB20170PC046380

NOTE:- Specifications are subject to change without prior notice refer to details in quotation